

“Capitalizing the inland valley potential for food and nutrition security for smallholder farmers in West Africa”

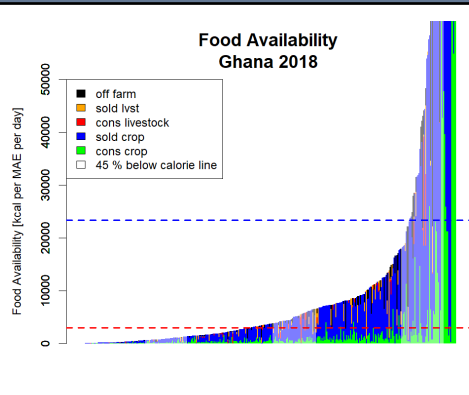
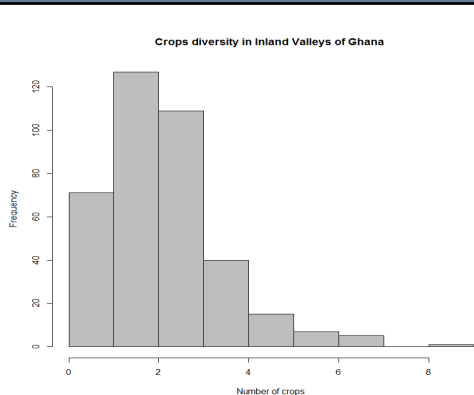
Guy Marius Assogba, Tesfahun Belew

RHOMIS: Socio-economic and Agronomic Baseline survey

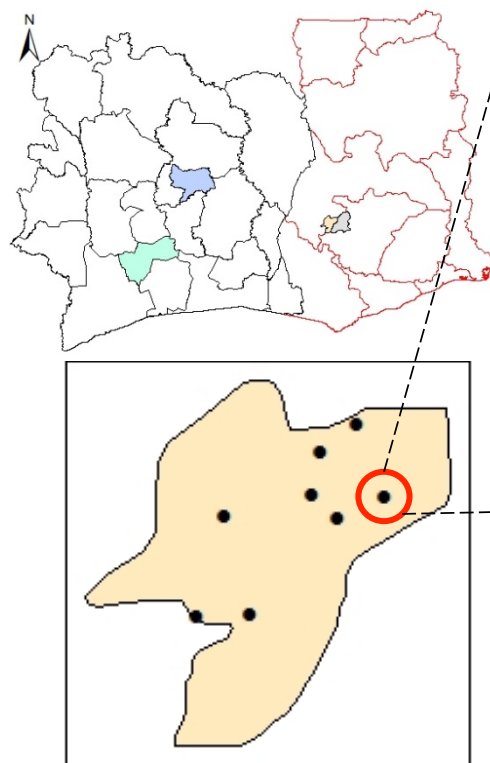
Objectives of baseline survey

- Characterize farming systems in the IVs
- Capture farmers’ perception about ecosystem services in IVs
- Identify existing resource use strategies

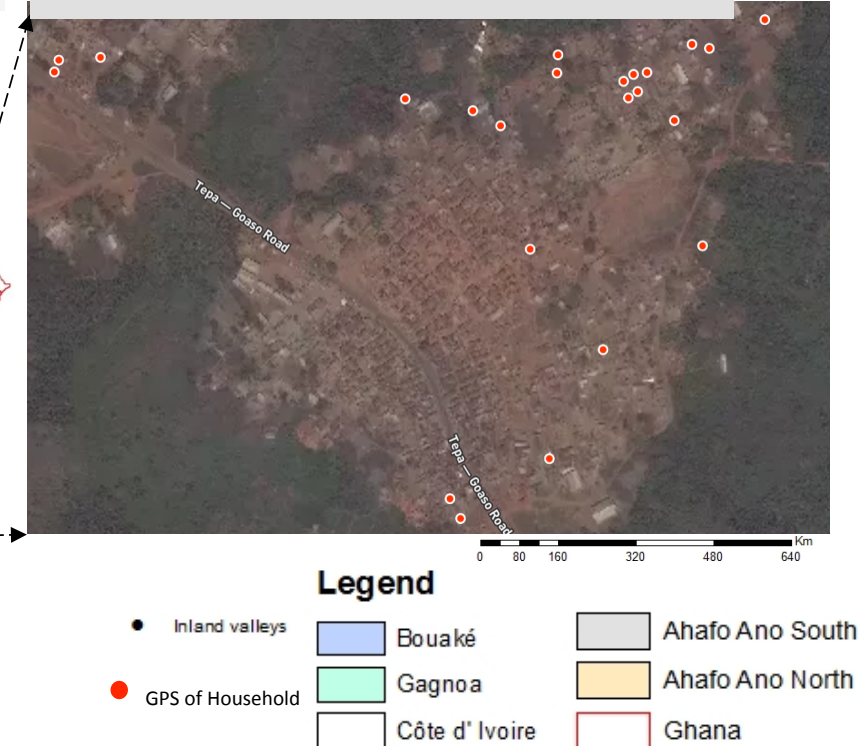
Country	Region/Agro-ecological zone	Number of consent HHs	Number of non-consent HHs	Total number of HHs
Ghana	Ahafo Ano South and Ahafo Ano North	379	4	383
Côte d’Ivoire	Bouake and Gannoa	407	15	422



Study sites and surveyed household's GPS



Example: Zoom in on inland valley of Any nasuso



- RHOMIS is a flexible tool for data collection, specific questions can be added without affecting the quality of RHOMIS’s Key Performance Indicators (KPIs) that suite to project specific questions.
- Houses of surveyed HH farmers were geo-referenced, it enables to identify of surveyed HH in case of monitoring or detail survey.